

Career match results:

# Analyser Driver



# Your personality style is: Analyser Driver

**Analyser Drivers are well-organised people who like to think about things carefully before deciding what to do. You like to follow rules and do things in a logical way. Your talent to think things through makes you great at solving problems.**

It also helps you to come up with new ideas. Your ability to make a plan and then put it into action is a great quality. You don't get too emotional, and you'd rather deal with facts and numbers than with people. You don't mind being around people, but you don't need to have them around you all the time. You enjoy being by yourself, to read and discover new things. You are creative and something of an inventor. You have a curious mind that leads you to be correct, organised and inventive. You demand the very best from yourself, and this can be tough on you, because you always want things to be perfect. You need to be challenged and in control, and you insist on sticking with something until you are an expert at it.



## Words that describe you:

- ✓ Inventive
- ✓ Creative
- ✓ Demanding
- ✓ Thinking Ahead
- ✓ Forceful
- ✓ Quiet
- ✓ Thoughtful
- ✓ Logical
- ✓ Active
- ✓ Alert
- ✓ Results-Focused
- ✓ Straightforward
- ✓ Self-starter
- ✓ Perfectionist

## Why you're an Analyser Driver

MyCareerMatch uses four style identifiers, (D) DRIVER, (P) PROMOTER, (S) SUPPORTER and (A) ANALYSER.

When blended together in varying percentages, these four personality styles make us who we are. There's no right or wrong style and one style is not better than another. What's important is what you do with your talents, your skills, your education and how you get along with others.



### Driver

**Drivers are Adventurers.**

Strong-willed and practical. They like action and results. Drivers want to lead, be the boss and win every challenge.



### Supporter

**Supporters are Helpers.**

Kind, dependable and practical. They are easy to get along with and enjoy helping people.



### Promoter

**Promoters are Socialisers.**

Outgoing, fun and charming. They are great communicators who inspire others with their imagination.



### Analyser

**Analysers are Thinkers.**

Great with facts and numbers, well-organised, strive for accuracy and like to pay attention to details.



# Your personality strengths



---

## Being realistic

You are a logical person and make a difference by not getting emotionally caught up in the problem. By making realistic plans and decisions based on facts and data, you reduce conflict and stress.

---

## Setting high standards

Your natural instincts to win mean that you set high standards for yourself and others. You make a difference by encouraging others to be the best they can be and not to expect anything less than success. You respect loyalty and hard work.

---

## Solving problems

You are a natural and gifted problem solver. You make a difference by being able to get to the core of a problem and provide solutions that work. You see the problem as a challenge rather than a setback, and this gives you the clarity to see through it.

---

## Keeping things simple

You make a difference by making the difficult seem easy. Your skill is to keep things simple by identifying the steps needed to implement a plan. It's a great talent to have!

---

# ...and soft skills

---

## Respecting rules

You respect authority and are willing to use your authority with a sense of fairness. You understand that rules are meant to be followed because they create order and a method by which things get done. You make a difference by sticking to procedures and systems

---

## Gathering information

Your strengths in gathering and collating information make a difference by enabling you to produce factual material such as manuals and text books and enabling you to store information so that it can be accessed efficiently.

---

## Finding mistakes

You are good at finding mistakes and preventing problems before they happen. You double-check your work and that of others. This often leads to uncovering mistakes and seeing problems before they occur. You make a difference by your thoroughness, eye for detail and research.

---

## Meeting deadlines

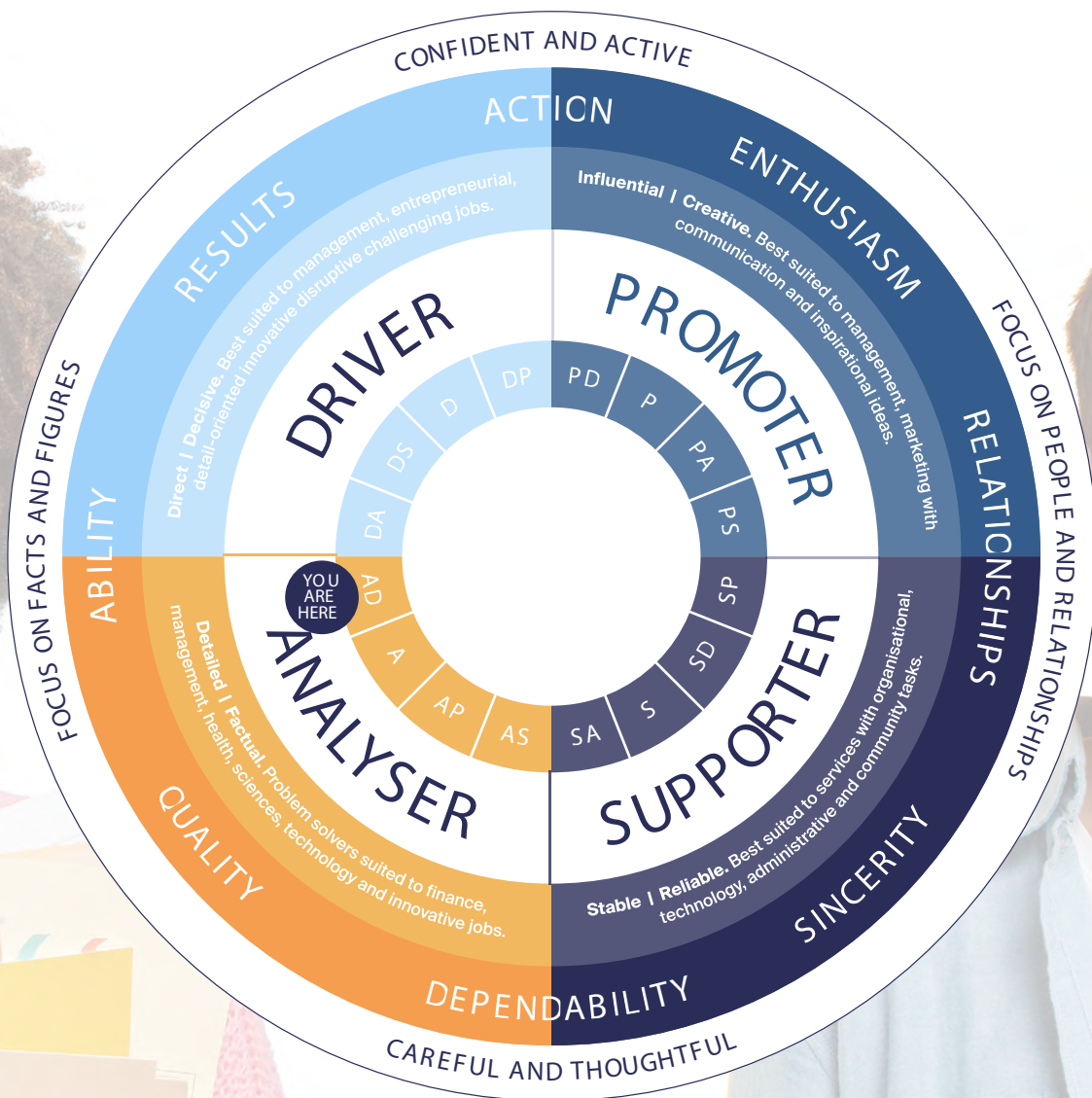
You are realistic and strive for results such as getting things done on time, or saving money or figuring out how to be more productive. You want to see tasks completed efficiently. You make a difference by ensuring that things are done correctly and deadlines are met.

---





# Your personality map



## How To Interpret Your Personality Map

The Map is divided into the four MyCareerMatch styles, **DRIVER | PROMOTER | SUPPORTER | ANALYSER** and combinations of each style (DA, DP, DS etc.). Your style is shown as ‘YOU ARE HERE’.

The outer circle represents what you focus on and how you approach life. Drivers and Analysers focus on facts and figures, Promoters and Supporters focus on people and relationships. The middle circle represents what’s important to you - for Drivers, it’s results for Promoters it’s enthusiasm, for Supporters its sincerity and Analysers quality.



# Why choose a course that matches your personality?

There is significant research on the connection between personality and achievement. It's logical the more you connect to the course, the more time and effort you put in. This creates confidence in the way you feel about your studies resulting in better grades. Major studies over the past ten years show that when your personality is a good match to the course you are likely to:

- ✓ **earn higher grades**
- ✓ **stick with your choice through graduation**
- ✓ **graduate on time**
- ✓ **be more satisfied and successful in your career**

When the course you take matches your strengths and talent, the more passionate you become and the greater the personal reward of purpose and job satisfaction you have.

## **Does the match between a student's personality and course affect results?**

This question was investigated in an impressive study by Tracey and Robbins. They followed 80,574 students over a five-year period. The results showed that good grades are related to having a course close to one's personality. In short, you'll earn better grades and find more success if you choose a course that matches your personality.

**Over the next few pages, you'll find career options and training recommended to suit your own personality.**

# Suggested career paths

## Cloud Technology

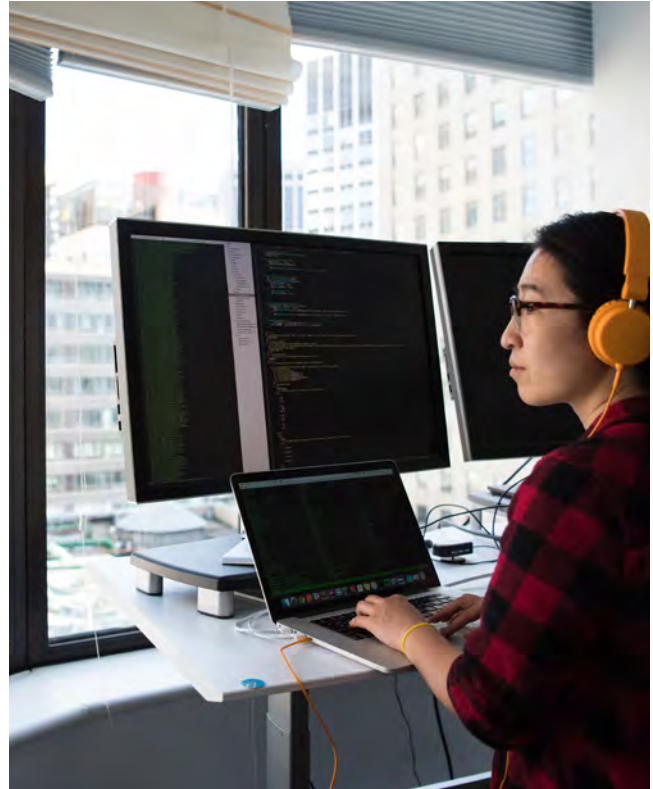
**The 21st Century revolution of digital collaboration and operational agility.**

With more than 90% of enterprise business already utilising Cloud services, this growing technology sector is crucial — both now and in the future. Cloud technology specialists help organisations to implement and maintain secure services — ensuring efficient flexibility and scalability.

EXPLORE THIS CAREER



<https://www.learningpeople.com/courses/accreditor/amazon-web-services/>



### Job roles in this field:

- ✓ Cloud Architect
- ✓ Cloud Consultant
- ✓ Cloud DevOps Engineer
- ✓ Cloud Engineer
- ✓ Cloud Network Engineer
- ✓ Cloud Security Architect
- ✓ Cloud Security Manager
- ✓ Cloud Solutions Architect
- ✓ Cloud Support
- ✓ Cloud Support Engineer
- ✓ Cloud Sys Ops
- ✓ Cloud SysOps Administrator



# Suggested career paths

## Cyber Security

Helping people and organisations stay safe and secure against the increasing threat of cybercriminals.

With a 0% unemployment rate, the demand for Cyber Security professionals continues to grow globally. Cyber Security professionals help organisations to keep their data safe by either working defensively or offensively. Monitoring, testing, and defending systems and software is a crucial focus of this role.

EXPLORE THIS CAREER



<https://www.learningpeople.com/courses/cyber-security-courses/>



### Job roles in this field:

- ✓ Cyber Security Analyst
- ✓ Cyber Security Consultant
- ✓ Cyber Security Technician
- ✓ Cyber Security Analyst
- ✓ Cyber Security Architect
- ✓ Incident Response
- ✓ IT Auditor
- ✓ Network/Cyber Security Manager
- ✓ Penetration Tester
- ✓ Security Engineers
- ✓ SOC Analyst
- ✓ Security Analyst

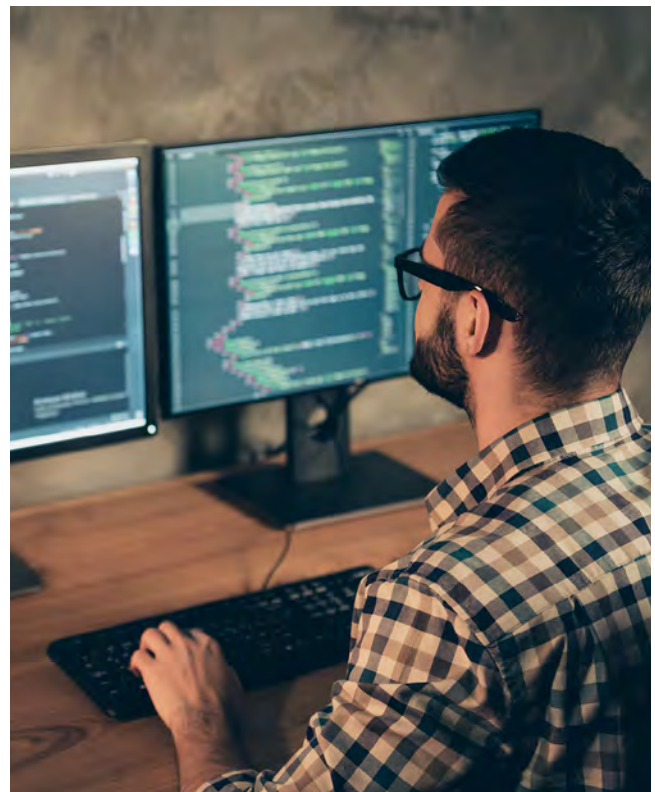
# Suggested career paths



## Ethical Hacker

**Hacking target systems to identify weakness and vulnerabilities.**

Ethical hackers use commercial-grade hacking tools, techniques, and methodologies to hack an organisation lawfully. By using ethical hackers, an organisation can identify any 'weak spots' in their networks and systems, which can then be strengthened against a potential criminal or malicious Cyber Security attack.



EXPLORE THIS CAREER >

<https://www.learningpeople.com/course/ec-council/ec-council-ethical-hacker/>

### Job roles in this field:

- ✓ Ethical Hacker
- ✓ Penetration Tester
- ✓ Incident Response
- ✓ Red Team Analyst
- ✓ White Hat Hacker
- ✓ SOC Analyst

# Suggested career paths



## Senior Management

**The execution of precise objectives based upon strategic planning.**

The role of a senior manager is one of ultimate responsibility. A senior manager will engage directly with directors, vice presidents, and owners of organisations. While also being responsible for their team's overall direction and performance. Spanning all technical sectors and industries, the requirement for senior managers is greater than ever.



EXPLORE THIS CAREER



<https://www.learningpeople.com/career/change-management/>

### Job roles in this field:

- ✓ Business Change Manager
- ✓ Senior Business Analyst
- ✓ Change Manager
- ✓ Senior Change Manager
- ✓ Service Change Manager
- ✓ Solutions Change Manager
- ✓ Cloud Security Manager
- ✓ Software Developer Manager
- ✓ Network/Cyber Security Manager
- ✓ Data Manager
- ✓ IT Project Manager
- ✓ PM Agile Project Manager





[www.learningpeople.com](http://www.learningpeople.com)

Est. 2010  
**learning  
people**